

A person is holding a blue stress ball in their hand. The stress ball has the 'mind in Salford' logo on it. The background is blurred, showing a red wall and a person's face.

 mind
in Salford

**Become a
Corporate Partner**

Contents page

02

Who we are

03

Mission, Vision & Values

04

Why work with Mind in Salford?

05

How could this benefit you?

06

How you can get involved

07

How your money can help

08

Our impact

09

Fundraise for Rainbow Mind

10

Meet some of our current partners

11

Ways you can donate

12

How to get in touch

Who we are

Charity Status

Mind in Salford is an independent charity with our own board of trustees and financial income. We are proud to have achieved the Mind Quality Mark, accredited by the charity commission.

We are a company limited by guarantee.

Registered Charity Number: 1156625



**A message from our Chair
Rimpy Batta**

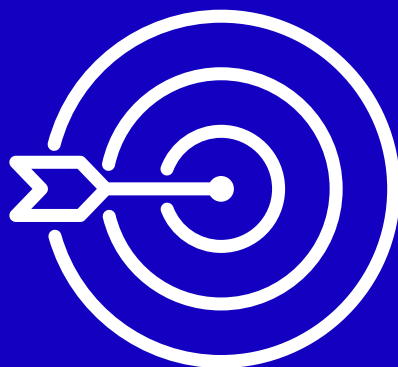
“I joined Mind in Salford as Chair of the Board of Trustees in March 2024. My career is in the NHS and Charity sector. I am proud to serve as Chair to support and implement the fantastic work of the Senior Management Team, all staff and volunteers that enable local people to access and benefit from services.”



**A message from our CEO
Markus Greenwood**

“We believe in building a resilient community where we all help each other and strive and campaign for better mental health care. A place where we can talk freely about our mutual mental health struggles and create responsive and welcoming services. A place where multiple marginalised identities are understood and celebrated.”

Mission, Vision & Values



Mission

Our mission is to use fierce compassion, diverse expertise and a person-centred approach, to campaign and provide radically caring, impactful services that make a positive difference to the wellbeing and mental health of local people.

Vision

Our vision is to make a positive difference to the wellbeing and mental health of local people and to have a society that is compassionately supportive and respectful.



We value...

Lived Experience

Your strengths and lived experience shape and impact our work to support and fight for better mental health.

Respect

We recognise intersectionality and value our differences – we strive for equity for all.

We are...

Community Focused

Our community is at the heart of everything we do – we listen and respond with supportive expertise.

Compassionate

We are motivated by compassion and provide support without judgement to help you improve your resilience and self-care.



Why work with Mind in Salford?

Will you join us in the fight for mental health?

Despite the current mental health crisis, most of us don't get the help we need. **This has to change.**



51%

of long-term sick leave is due to stress, depression, or anxiety.

Each year **17.1 million** working days are lost due to depression, anxiety and stress.

1 in 6.8 people experience mental health problems in the workplace.



By working hand in hand with us, your business will form an integral part of our strategy to make a positive difference to the wellbeing and mental health of local people. **This means that we are supporting the mental health of your employees, colleagues, family and friends.**

How could this benefit you?

Joining us as a corporate partner will give your company clear and measurable benefits.

A corporate partnership enables you to:

- **Meet corporate social responsibility objectives**
- **Engage with the community in which you operate and trade**
- **Explore marketing opportunities across trade and social media**
- **Build a sense of pride and motivation amongst your team**
- **Create opportunities for positive stakeholder engagement**
- **Stand out among your competitors in a crowded marketplace**



How you can get involved



Take part in workplace training facilitated by Mind in Salford

Charity of the Year

Sponsorship - make a corporate donation

Employee fundraising

Cause-related marketing

Payroll giving

Take part in an event

Work with our fundraising team to create bespoke events

No matter how big or small your business is, your support will be featured on our social media platforms and on a dedicated corporate partnership page on our website, where you will reach new clients and illustrate your support for the Salford community.

How your money can help

The support you give in Salford, stays in Salford.

£10 - An introductory call with our Advice Team

£50 - A 1:1 therapy session with our LGBTQIA+ service, Rainbow Mind

£125 - A half day Mental Health Awareness training session

£225 - A suicide ASIST two day training course

£325 - A Mental Health First Aid two day training course

£640 - Delivery of an 8-week Mindfulness course



Fundraise for Rainbow Mind



Greater Manchester

Rainbow Mind is a collaborative service between Mind in the City, Hackney and Waltham Forest and Mind in Salford, aiming to tackle mental health issues for individuals within the LGBTQIA+ community.

Demand for LGBTQIA+ mental health support continues to grow. Last year, Rainbow Mind supported 52 clients, with strong reach into trans and non-binary communities (13.9%) and racialised communities (34.2%). Your fundraising ensures we can continue offering free or low-cost therapy, compassionate wellbeing programmes, and events to those who need them most.




Your support helps LGBTQIA+ people in Salford feel seen, heard, and supported - often at the moment they need it most. Together, we can build a community where every identity is respected and every person can access the mental health care they deserve.

Our impact

We advised 737 Welfare Rights & Debt Advice clients, gaining income of £22,177 pm and wrote off £163k debt.



 mind in Salford Our Impact 2023 - 2024

2089 people supported through our advocacy service




 mind in Salford Our Impact 2024 - 2025

Helped over 160 of our clients in Secure Mental Health Wards



Some of whom experience issues such as Schizophrenia, PTSD or Depression

 mind in Salford Our Impact 2023 - 2024

Mental Health First Aid Champion training provided to 368 people across Salford



 mind in Salford Our Impact 2024 - 2025

 mind in Salford



Testimonials

“It was so scary being in hospital, but my advocate was so patient and explained my rights to me in a way I understood. Then when I came out of hospital she still stayed as my advocate in the community.”

Advocacy Service User

“

I am now confident to ask someone if they are ok. People have responded well to me asking mental health questions using the techniques learnt on the course.”

Mental Health First Aid training attendee



 mind in Salford Testimonial

Through our Rainbow Mind 1-1 therapy service we have supported 52 clients, with a strong reach into trans and non-binary communities (13.9%) and racialised communities (34.2%)



Our Impact 2024 - 2025

“

Accessing the one-to-one therapy service came at a time when I really needed the extra space and support. I didn't have to explain or defend my identity - I was simply accepted. That experience alone was incredibly grounding, and the sessions helped me understand myself more clearly and with more compassion.”

Rainbow Mind 1-1 Therapy Client



Testimonial

Meet some of our current partners

Further Media Works



Keolis Amey Metrolink



HAHN Plastics



We have also received support from:



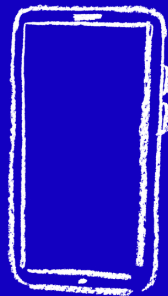
RunThrough



Ways you can donate



Donate directly through [our website](#). This can be either a one-off or regular donation.



Text 'SALFORDMIND' to 70085 to donate £3. This costs £3 plus your standard text rate. To give any whole amount up to £20, text 'SALFORDMIND' followed by the number (for example: SALFORDMIND 10 to give £10)



If you are thinking of leaving a gift in your Will to Mind in Salford, please contact fundraising@mindinsalford.org.uk who can provide information about our services and local solicitors that we work with.







If donating by cheque, please make it payable to 'Mind in Salford', mark it for the attention of the Fundraising Team and post to:

Mind in Salford
The Angel Centre
1 St Philips Place
Salford
M3 6FA

Mind in Salford
The Angel Centre
1 St. Philips Place
Salford
M3 6FA
Registered Charity
Number: 1156625

t: 0161 710 1070
e: info@mindinsalford.org.uk
W: mindinsalford.org.uk

 **Mind in Salford**
 **@mind_in_salford**
 **Mind in Salford**
 **Salford Minds**